

2022 - 2023

Pentrepoeth Primary School

Annual Governors' Report to Parents



Mr J Griffiths
Chair of Governors

'creating a **C**aring, **R**espectful,
Open **E**nvironment
where **S**uccess and
Oppportunity flourish'

Chairperson: Mr J. Griffiths
C/O Pentrepoeth Primary School
Bryn Hedydd
Cwm Cwddy Drive
Rhiwderin Heights
Newport
NP10 8JN
01633 897400

Clerk to Governors: Mrs Sarah Morgan
Newport City Council
Education Department
Civic Centre
Newport
01633 233220

Mr J H Griffiths	Chair. Co-opted Governor
Mr J S Barrowman	Co-opted Governor
Mrs T Jenkins	Co-opted Governor
Mrs R Davies	Co-opted Governor
Councillor Mr J Jones	LEA Rep
Councillor Mr D Williams	LEA Rep
Mr D Walsh	LEA Rep
Councillor Mrs R Howells	LEA Rep
Mrs T Appleton	Community Council
Mr D Taylor	Headteacher
Mr R Cleaves	Teacher Rep
Mr L Nocivelli	Teacher Rep
Mrs L Rowe	Support Staff Rep
Mr D Coles	Parent Governor
Mrs K Prendergast	Parent Governor
Mr T Jones	Parent Governor
Mrs J Cueto	Parent Governor
Mrs G Brace	Parent Governor

Arrangements for Next Election of Parent Governors

When an existing parent governor comes to the end of their term of office, or if they resign mid- term, the school will hold a ballot to elect a new parent governor. At that time, the school will write to all parents advising of the ballot and seeking nominations for prospective candidates from the parent body

This report is produced by us, the governing body, for you, the parents and carers of pupils in our school.

It contains information which we are required to provide by law, as well as additional information which we hope will aid your understanding of the school. It covers our achievements during 2022 – 2023 and sets out our targets for future improvement.

Through this report, we want to encourage dialogue and communication with parents and carers, and to promote increased interest and involvement of parents in the activities and development of our school.

All governors regularly meet twice a term with additional meetings as and when necessary.

In the event of a vacancy on the governing body for a parent governor, letters will be sent to all parents/guardians informing them of this and they will be given the opportunity to nominate a parent to replace. If more than one nomination is received an election will be held.

The governing body has not received a petition from parents requesting a formal meeting to discuss this report and therefore no meeting will be held (Section 94, School Standards and Organisation (Wales) Act 2013.)

SCHOOL PROSPECTUS

The school prospectus was updated, for example, with changes to staffing and staff roles, classes and results. A copy of the prospectus can be found on the school website.

<https://www.pentrepoethprimary.co.uk/school-prospectus>

Name	Pentrepoeth Primary School
Classification	County Primary School
Pupil age range	3 to 11 Years
Address	Cwm Cwddy Drive Rhiwderin Heights Bassaleg Newport NP10 8JN
Telephone	01633-896101
Email	Pentrepoeth.primary@newportschools.wales
Website	www.pentrepoethprimary.co.uk

School year 2022-2023

Term	Start	Half Term Starts	Half Term Ends	Term Ends
Autumn 2022	2 September	31 October	4 November	23 December
Spring 2023	9 January	20 February	24 February	31 March
Summer 2023	17 April	29 May	2 June	21 July

May Day - Monday 1 May 2023

Closed for In-Service Training (INSET)

Friday 2nd September 2022

Friday 23rd September 2022

Monday 21st November 2022

Thursday 22nd December 2022

Friday 23rd December 2022

Friday 17th February 2023

School closed for the Queen's Funeral

Monday 19th September 2022

Bank holiday for Coronation

Monday 8th May 2023

Of King Charles III

Contact methods

- For absences, please telephone or email to inform school before 9.30am on the day.
- For 'quick' issues, you can communicate with staff at the end of the school day, or by telephone or email.
- If you wish to speak with a member of staff and need more than 5 minutes, please telephone or email to arrange an appointment.
- You can follow our school X feed, which you can access from the following link <https://www.pentrepoethprimary.co.uk/news> or by following @PentrepoethPrim on X. It is used to share school activities.
- All Foundation Phase classes use the Seesaw app to share learning and information with parents, while KS2 use Google classroom for all home learning tasks.
- The PTA Facebook page is used to share PTA events and activities.
- Parental Consultations take place twice a year, during the Autumn and Spring terms. We also offer a third consultation for parents to take up if they wish at the end of the summer term to discuss end of year reports.
- 'Teachers2parents', a text messaging communication system, is used to communicate with parents.

Session Times

Foundation Phase – 9:00am – 3:15pm

Key Stage 2 – 9:00am – 3:30pm



Estyn

Estyn carried out a full Inspection in May 2023. The school and Governors were extremely pleased with the outcome of the Inspection and the acknowledgement of the hard work from pupils, staff and Governors. The school was left with one recommendation. This recommendation has formed part of the School Improvement Plan Targets and the school is moving towards making progress on this. The full inspection report can be found by clicking [here](#)

R1 – Improve opportunities to build pupils' Welsh vocabulary and sentence structures progressively to ensure consistently strong progress as they move through the school

Actions to Promote Healthy Eating and Drinking

The school has already achieved Phase 1, Phase 2, Phase 3 and Phase 4 of the scheme and we have now achieved the NQA award, with no recommendations. Health and Fitness Days for Foundation phase and Key Stage 2 and healthy breaks are now important parts of the scheme. Pupils are encouraged to drink water throughout the school day and 3 water fountains are located around the school. These are maintained by an external company who also provide facilities for hand washing in the pupils' toilets.

Community Links

The governing body are keen to develop links with the local community and to give pupils a sense of belonging as active citizens in their local, national and global community. The community supported a local foodbank at Harvest and also supported Children in Need and Comic Relief.

Attendance

Our Educational Welfare Officer is available to help families with regard to attendance and welfare matters concerning school.

The Headteacher and Mr Willmore regularly monitor attendance and punctuality and discuss pupils whose attendance causes concern. Parents are asked to phone or email on the first day of absence to let us know why your child is absent or late. The attendance officer will sometimes follow up on these calls.

Attendance last year was **93.2%**

Authorised absences – **4.6%**

Unauthorised absences – **2.3%**



Group	Presents	AEA	Authorised Absences	Unauthorised Absences	Possible	% Attend
NAM	3798	0	271	161	4230	89.8
NPM	3710	0	371	288	4369	84.9
RLE	10596	9	388	227	11220	94.5
RLN	10595	0	393	232	11220	94.4
1AD	10033	56	580	327	10996	91.8
1SB	10088	2	487	310	10887	92.7
2JB	10477	0	741	376	11594	90.4
2JR	10347	4	457	294	11102	93.2
3TM	10639	60	370	115	11184	95.7
3GB	10398	0	607	205	11210	92.8
4TG	10402	54	397	169	11022	94.9
4RH	10387	56	471	246	11160	93.6
5JW	10278	9	547	305	11139	92.4
5JB	10014	24	403	179	10620	94.5
6GS	9980	320	483	283	11066	93.1
6EJ	10110	415	530	219	11274	93.4

We can only achieve the expected standards if you support us by ensuring your child is in school when they should be.

We focus on attendance because...

- School work is easier to cope with
- Pupils feel more secure
- Friendships more easily maintained
- Longer term prospects are better being on time

We focus on lateness because.... If your child is 10 minutes late a day they miss:

- 50 minutes learning a week
- 633 minutes a term
- Over 32 hours a year

MISSION

Our mission at Pentrepoeth Primary is to create a

	Caring
	Respectful
	Open
	Environment
in which	Success and
	Opportunity flourish

AIMS

The whole school community aims to develop pupils who are:

Ambitious, capable learners who are ready to learn throughout their lives.

Enterprising, creative contributors who are ready to play a full part in life and work.

Ethical, informed citizens who are ready to be citizens of Wales and the world.

Healthy, confident individuals who are ready to lead fulfilling lives as valued members of society.

Values

Aim

It is our aim to raise standards by promoting a school ethos which is underpinned by core values. These values support the development of the whole child as a reflective learner within a calm, caring, happy but purposeful atmosphere.

Rationale

We realise that during recent years a great deal of national and local effort has been directed towards school improvement and curriculum development. However we also believe that Values Education has a crucial role in education, because it plays a part in raising achievement and it encourages pupils to be self-disciplined active learners. Values Education supports quality teaching and learning, whilst making a positive contribution to the development of a fair, just and civil society.

As a whole school community we believe that the ethos of the school should be built on a foundation of values. Some of the values we focus on include peace, equality, courage and empathy.

These are addressed directly through whole school assemblies, at times through lessons and circle times, but also permeate the whole curriculum. Our Values are the basis for the social, intellectual, emotional, spiritual and moral development of the whole child. We encourage children to consider these values and thereby to develop the knowledge, skills and attitudes that enable them to develop as reflective learners and grow to be stable, educated and civil adults. We are also a Rights Respecting School and acknowledge the clear links between these values and Children's Rights.

Sports and Extra-Curricular Activities

Each week, all classes received two lessons of physical education. Year 6 attended statutory swimming sessions at NSIV, which were delivered daily over a three-week period. In 2022/23 we restarted our full offer of after school clubs. This continued throughout the academic year. Children had the opportunity to take part in the following clubs.

Reception – Dance

Year 1 – Art, Dance, Singing, Multi-Sports and Lego

Year 2 – Dance, Art, Singing, Lego and Football

Year 3 – Choir, Football, Tennis, Art and Netball

Year 4 – Choir, Football, Tennis, Art and Netball

Year 5 – Netball, Rugby, Choir, Chess, Football, Engineering, Athletics and Cricket

Year 6 – Netball, Rugby, Choir, Football, Books & Boardgames, Athletics and Cricket

Our teams enjoyed a good deal of success in local tournaments which included, rugby, swimming and cricket. Of particular note was the swimming and football teams. Our swimming gala team won the Newport Schools' Gala and our mixed football team won the Newport schools league. What a fantastic achievement from all involved.

Residential Trip

We were also able to offer our Year 6 residential trip to Gilwern Outdoor Education. Pupils enjoyed a range of activities including rock climbing, hill walking, caving and canoeing.



Visits

All year groups took part in a wide variety of trips during 2022/23 academic year, organised to provide the children with meaningful learning experiences. This included:

- Gilwern Outdoor Education Centre (residential trip) – Year 6
- Harry Potter Studios – Year 5
- Cadbury World – Years 4
- The Wild Place Project – Year 3
- Fonmon Castle – Year 2
- Cyfarthfa Castle – Year 1
- Cefn Mably Farm Park – Reception





Parent and Teacher Association

Our PTA had a fantastic year and made a huge contribution to the running of the school. They raised over £8400 with some innovative and entertaining events. The PTA supported the school by helping to fund Leaver's hoodies, the Leaver's party as well as funding some of our school based learning experiences throughout the year. The PTA have also contributed a significant amount of money to the new playground markings.

The PTA have also given £150 to each year group to buy playground equipment for them to use at playtimes and lunchtimes.



All staff undertook TEAM Teach training ensuring they had the requisite skills for restraining and positively handling pupils who present extremes of behaviour. All staff also took part in training to further develop the teaching of welsh and the use of the Excellent teaching framework.

Staff also undertook training on Child Protection (Level 1 and Level 2 for certain staff), curriculum reform, approaches to numeracy, metacognition training and training on delivery of the 'No Outsiders' programme.

The school has worked hard this year to improve and maintain excellent standards in learning and teaching, and has been fortunate enough to be selected as a Curriculum Pioneer School to help to develop a new curriculum for Wales in line with Successful Futures.

Staff have also completed the following training courses

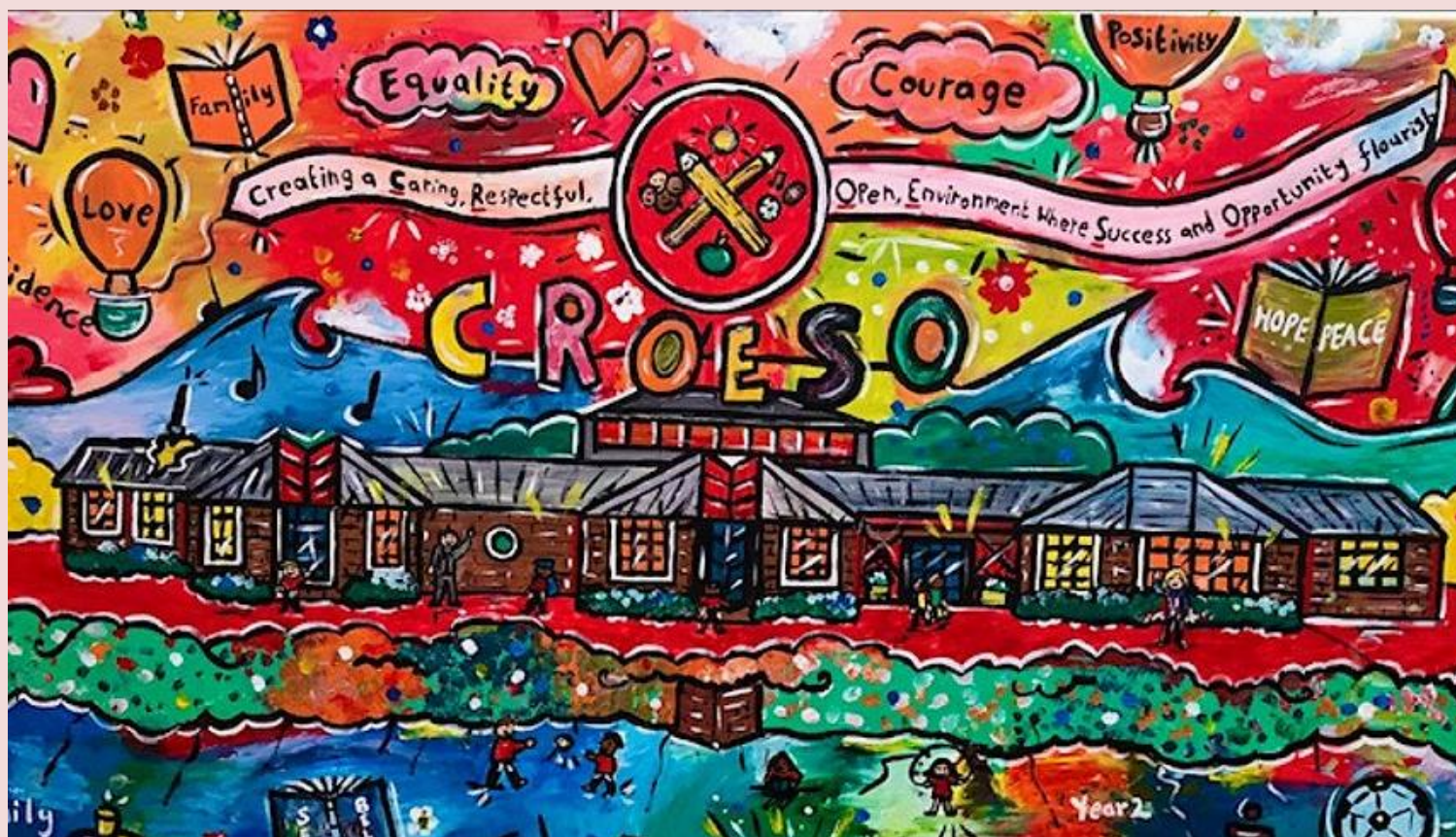
- First Aid training
- Allergywise training
- Epilepsy training

The school's Curriculum and Organisation of Teaching

The school aims to provide a broad, balanced and equitable education in a warm and nurturing environment. The teaching and learning opportunities we provide for our children are well aligned to the requirements of the Curriculum for Wales.

Nursery pupils are taught in two sessions; a morning or afternoon session. Each session is for 2 hours and 30 minutes with a maximum Pupil Admission Number of 24 in each session.

Children in school are taught in 14 single age year groups with ideally, no more than our statutory Pupil Admission Number (PAN) of 30 in each class. Each year group is 2 form entry.



At Pentrepoeth Primary School teaching through a theme/topic is used throughout the school to engage children of all abilities. Fundamental to this approach to learning is a clear progression in skills development. This helps the children to become engaged, enthusiastic and independent learners.

From September 2022, a new curriculum became statutory in Wales for children from 3 to 16 years of age.

The four purposes are at the heart of the new curriculum at Pentrepoeth Primary School to ensure that all children and young people are: -

- ambitious, capable learners;
- enterprising, creative contributors;
- ethical, informed citizens;
- healthy, confident individuals.

The curriculum is planned and taught with a focus on the basic skills of literacy and numeracy. Skills are taught separately and then applied across all areas of the curriculum. Children's acquisition of these key skills is monitored, assessed and reviewed on an on-going basis.

At Pentrepoeth Primary School, we recognise that well-being and mental health is at the heart of all education. We aim to care for our pupils' physical and emotional needs and to help them to take responsibility for their own lives.

Curriculum for Wales

‘Successful Futures’ outlines the need for common purposes that apply to all children and young people and promote high aspirations and a determination to achieve. At Pentrepoeth Primary School we advocate that learners should leave school having experienced a broad education that equips them to thrive in an increasingly complex and rapidly changing world.

As a forward-thinking school, we understand how children need to be rooted in their own cultures and have a strong sense of identity as citizens of Wales, the United Kingdom, Europe and the wider world. We aim to equip learners to be able to deal with difficult issues such as those that can arise from developments in science and digital technologies. We encourage and promote active citizenship, building our pupil’s confidence and resilience to debate issues that naturally arise. Learners’ confidence is built on a strong base of knowledge and respect for evidence.

Throughout Donaldson’s review, he reinforces Literacy; Numeracy and Technological skills that children are expected to acquire and apply in their daily lives. These skills are used across the curriculum and in all subject areas. At Pentrepoeth Primary School, learners are given opportunities to confidently engage with intellectual challenge and are ready to build on what they have previously learnt. Creativity and enterprise are central features of modern life, which are developed and extended throughout our school curriculum. The capacity to contribute individually or as a member of a team is an essential part of each child’s learning throughout the school day.

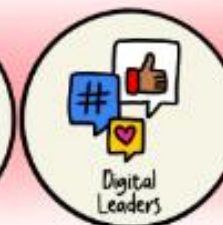


Our 'Challenge' Curriculum Summary

Our School Vision



Pupil Voice



The Four Purposes - We plan to ensure our children become ...

Ambitious, Capable Learners

who are ready to learn throughout their lives.



Healthy, Confident, Individuals

who are ready to lead fulfilling lives as valued members of society.



Ethical, Informed Citizens

who are ready to be citizens of Wales and the World.



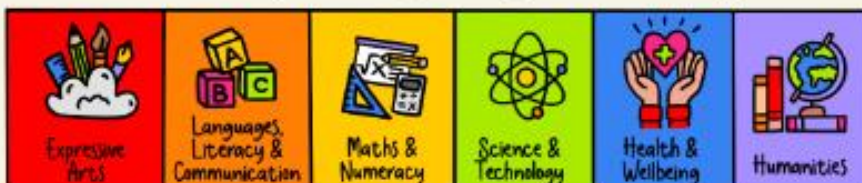
Enterprising, Creative Contributors

who are ready to play a full part in life and work.



Challenge Curriculum - How we do it!

Our curriculum is designed to maximise challenge with excellent teaching and learning experiences at its heart. Our curriculum is based on Values, the Rights of the Child and Character based education. We plan a range of experiences utilising ...



- ☒ Four Purposes
- ☒ What Matters Statements
- ☒ Cross Curricular Skills
- ☒ Cross Cutting Themes
- ☒ Descriptions of Learning



We plan using the Cross Cutting Themes. We foster an inquiry approach to learning... asking 'Why?' questions and using a cycle that involves 'tuning in', 'finding out', 'sorting out', 'going further' and 'reflecting and acting'. We plan 'Mini inquiries', have 'AOLE' weeks, 'Theme /Celebration' days and 'Off Road' days.

Culture of Learning

We build a culture and love of learning by:

Building Relationships for Learning - A culture of sincere and inclusive relationships

An Environment for Learning - A place where learning and learners thrive both indoors and outdoors and innovation, collaboration and responsible risk taking takes place

The Language of Learning - A dialogue for thinking and learning — utilising our 'Depth of Learning' model and our 'Learning to Learn' qualities

Modelling Learning - Opportunities to engage with, and learn from, more experienced learners, the use of our PPS teacher and pupil learning toolkits and strategies

Expectations for Learning - Culture of high expectations and challenge for all

Opportunities for Learning - An entitlement to a rich, authentic curriculum offer that is exciting stimulating. A blend of in school learning, enhanced through trips, visits, experts, use of 21st Century technology and wider experiences

Routines for Learning - A framework for learning and teaching

Time for Learning - Time for exploring, investigating and thinking

Community of Learning — involving parents, carers and wider experts in curriculum design, learning and school life

Inclusive Learning — responsive to individual learners needs, talents, diverse backgrounds and interests

Assessment & Progression

We plan for progression through the use of progression steps across all AOLES, using principles of progression and with reference to the mandatory code: Increasing effectiveness as a learner

Progression is guided by Descriptions of Learning which provide information on how children should progress within the What Matters statements for each AoLE. These are expectations across a period of time and broadly relate to age 5, 8, 11, 14 & 16

- Progression Step 1 -Nursery, Reception, Year 1
- Progression Step 2 -Year 1, Year 2, Year 3, Year 4
- Progression Step 3 Year 4, Year 5, Year 6

Increasing effectiveness as a learner

Increasing breadth and depth of knowledge

Deepening understanding of the ideas and disciplines within areas of learning and experience

Refinement and growing sophistication in the use and application of skills

Making connections and transferring learning into new context

Teachers and learners are involved in continuous assessment of learning and assessment in and for learning using a wide range of assessment tools and strategies

School Development Plan 2022-2023

For the Academic year 2022-2023 the school have been focusing on the following areas.

Year 1: 2022/2023	Priority
1	Sustain excellent teaching practices to maximise challenge and pupil levels of wellbeing and achievement
2	To further develop, embed and implement the school's bespoke 'Challenge' curriculum, assessment and progression processes.
3	To review and develop the teaching of mathematics and application across authentic learning in line with Curriculum for Wales

Progress towards these targets was very strong in all areas

The Language of the School

English is the everyday working language of the school. All pupils are taught through the medium of English.

Welsh Language

Use of Welsh language skills are taught in every class. Initially, much of the teaching takes place through incidental language during the course of the school day. Staff encourage pupils to use Welsh for everyday routine questions and requests as well as to hold simple conversations with other pupils and adults. Opportunities are given to develop pupils' oracy, reading and writing skills. We aim to create a Welsh ethos through introducing children to the history, art, music and geography of Wales. No pupils are exempt from Welsh language learning as this is part of the statutory National Curriculum in Wales

New policies Adopted in 2022-23

During the year the Governing Body adopted a number of policies. Statutory policies must be reviewed and adopted annually by every school's governing body. They detail processes in key areas of the school's work.

Provision of Toilet Facilities

There were changes to the toilet facilities for Year 3 to 6 during the academic year 2022/23. An addition disabled toilet was installed. A total refurbishment of the girls and boys toilets for years 3 to 6 was completed.

Meetings held following a parental petition

No meetings were held under Section 94 of the Schools Standards and Organisation (Wales) Act 2013

Finance

The budget allocated in 2022-23 was **£1,788,276** Which included a carry forward from 2021-22 of **£108,221** The financial out-turn statement ending 31st March 2023, giving details of income and expenditure is detailed on the next page. The school budget is overseen monthly by the finance team at Newport City Council and is monitored by the finance committee. Spending is allocated with the priorities of the school

Development plan and a summary is available in the plan. The various headings of the Section 52 statement breaks down expenditure into various areas

No gifts are identified for this financial year and no member of the governing body claimed travel or subsistence.

Pentrepoeth Primary

Financial Statement for Year Ending 31st March 2023

2021/22 Outturn		2022/23 Outturn
£	Employees	£
1,211,711	Teachers	1,188,534
275,187	Support Staff	477,003
25,789	Caretakers	28,647
27,441	Midday Supervisors	37,503
0	Cleaners	0
Other Employee Costs		
22,857	Supply Insurance Premium	23,608
147,296	Agency Staff	122,061
0	Lunch Time Meal Entitlement	0
0	Foreign Language Assistants	0
0	Exam Invigilators	0
0	Advertising	0
0	Interview Expenses	485
1,167	Misc Employee Costs	1,357
Energy		
7,218	Gas	7,735
12,656	Electricity	13,300
0	Oil	0
85,682	Capitation and ICT	117,560
0	SCC, EIG and PDG Expenditure	0
Premises Related		
1,323	Hire of Facilities	673
49,517	Rates	28,890
15,493	Building Maintenance and Alarm Lines	46,422
7,987	Grounds Maintenance	12,937
4,938	Water	4,326
24,022	Building Cleaning Contract	22,953
5,094	Refuse Collection	5,420
15,615	Miscellaneous Premises	58,329
Communications		
51	Postage/Fax/Telex	4
4,395	Telephones	5,166

Transport		
6	Vehicle Maintenance	10
0	Purchase of Vehicles	0
0	Vehicle Hire	9,447
0	Car Allowance	219
301	Travel Expenses	7
0	Exam Fees	0
External Courses		
2,996	School Funded Training	3,150
0	Alternative Curriculum Provision	0
0	Sixth Form	0
33,430	Central Services	35,268
Income		
0	Lettings	0
-13,687	Sales Income	-7,774
-1,378	Music Service Income	-28,135
-5,650	Donations	-11,710
-2	Miscellaneous	0
-11,998	Supply	-14,125
0	Exam Fees	0
558	Interest	-425
0	Rental Income	0
0	EIG	0
0	PDG/EYPDG	0
0	Energy Compensation	0
0	Coaching Fees	0
-375,503	Other Grant and Contributions	-271,813
0	Reserve Transfer	0
0	After Schools Club	0
1,574,513	Total Net Expenditure	1,917,032
Total Funding		
1,639,995	Total Funding	1,788,278
65,482	In Year Surplus / Deficit	-128,753
108,221	Prior Year Surplus / Deficit	173,703
173,703	Accumulated Surplus / Deficit c/fwd	44,950
10.59%	Balance as % of Funding	2.51%